

Academic Portfolio of Leah Hough
December 2011

Leah Hough
Plan IV Graphic Design
Visual Arts Department
CSUSB
Art 443 Fall 2011
Design Professor George McGinnis

Leah Hough



Objective To obtain a position as a Graphic Designer that gives me the opportunity to use my artistic, technical, and professional skills in a friendly and professional group environment.

Education -**Winter 2004-Spring 2006, Riverside Community College**
AA with an emphasis in Visual Art. Graduated with Distinction. Vice President of the Art Club for the 2005 Fall semester.

-**Fall 2008-Winter 2012, California State University San Bernardino**
Graduating March 2012 with my B.A. in Art-Graphic Design.

Experience -**December 2010-Present, Freelance Designer for *Various Clients**

Designing blog headers and logos for *sumflourpower.blogspot.com, polkadottedbluejay.blogspot.com, and E.P.I.C. Youth.

-**October 2007-April 2011, The Community College Foundation**

Tutor of K-8th grade students in Math and Language Arts. I used my interpersonal skills to identify the client's needs, develop a strategic plan, and responsibly follow through in order to expand the client's knowledge of the subjects with which they struggled.

-**Sept 2009-Nov 2010 and Feb-April 2011, Acura of Riverside**

My time as a *Concierge/Cashier* at Acura allowed me to implement my organizational skills in filing for all departments, keeping an Excel spreadsheet of all sales while double checking actual cash, credit cards slips, and checks, and also using organization in restocking the office supply room and completing custom orders.

-**November 2006-February 2008, Harvest Christian Fellowship**

Resource Processor for Greg Laurie's call center for radio, TV, and Crusade outreaches. My duties included data entry, taking orders over the phone, processing orders and donations by phone, internet, and mail, solving returned mail problems, and efficiently keeping up with the Needs More Information and Credit Card Decline folders.

-**October 2003- November 2006, Macy's**

Sales associate at Macy's, formerly called Robinsons May. Assisting guests at the register and on the floor, organizing and cleaning my departments, preparing new stock then filling in racks and tables on the selling floor, price change implementation, opening credit card accounts, and opening and closing registers.

Specialties Proficient in Illustrator and Photoshop and have a good knowledge of InDesign (CS4 & 5). Some knowledge of Cinema 4D from one quarter at CSUSB. Before 2008, I worked solely on PC's with Windows 98 and XP using Microsoft programs such as Word, Powerpoint, Excel, and Outlook. Now I work on Mac with Snow Leopard and Lion. I have experience with oil, acrylic, pencil, colored pencil, conte crayon, charcoal, watercolor, scratchboard, mixed media, and artist pen media.

CORPORATE IDENTITY

Community Bank:	9. Logo 10. Stationery and Check
Scuba Sports:	12. Logo 13. Stationery
Marshall's Fudge:	15. Logo
Peet's Tea:	17. Logo

PROMOTION

Community Bank:	20. Magazine ad 21. Website
Scuba Sports:	23. Insulated Bottle 24. Website
Outside Magazine:	26. Cover 1 27. Cover 2
USA Service:	29. Poster
Emma	31. Book cover

PACKAGING

Peet's Tea:	34. Tea Box Templates 35. Tea Packets and Tags 36-38. Photographs
Marshall's Fudge:	40. Bag Templates 41-42. Photographs
Fine Art:	44. "How Great Thou Art" 45. "Peeps" 46. "Winter Wonderland"

(Corporate Identity)



Redesigned logo for Community Bank

Full Color:



Gray Scale:



Stationery and Check



Community Bank
Partnership Banking

David P. Malone
President and CEO
t: (626) 568-2265 f: (626) 568-2289
david.malone@cbank.com
cbank.com

*"We're here to help
you every step of
the way"*

Community Bank
Partnership Banking

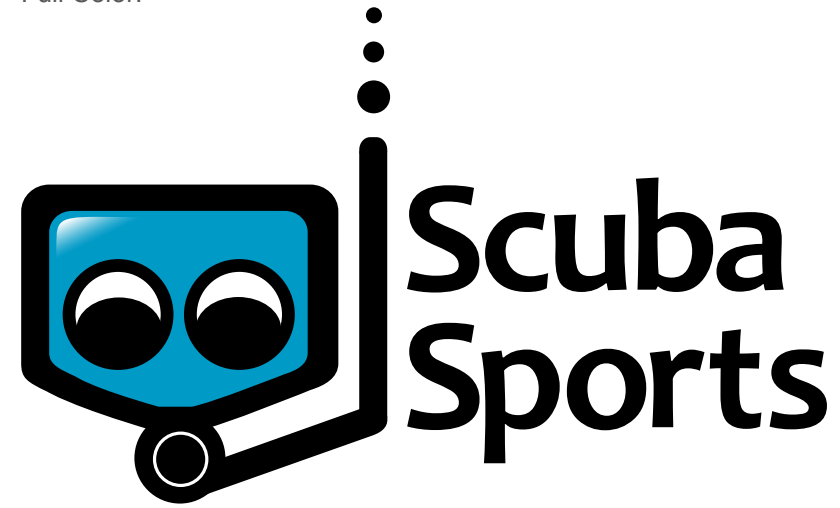
Wendy Darling 12789 Hermina Ct Alabaster, CA 95508	1234
PAY to the order of _____ \$ _____	
Community Bank Telephone Banking Center 1-800-788-9999	DOLLARS
FOR _____	MP
: 122267889 : 367448327 1234	



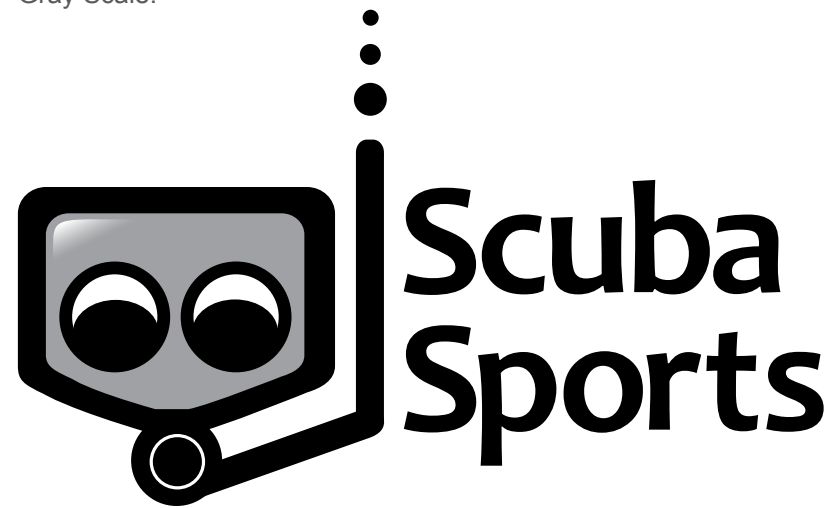
(Scuba Sports)

Redesigned logo and name change for Extreme Sports Scuba, Inc

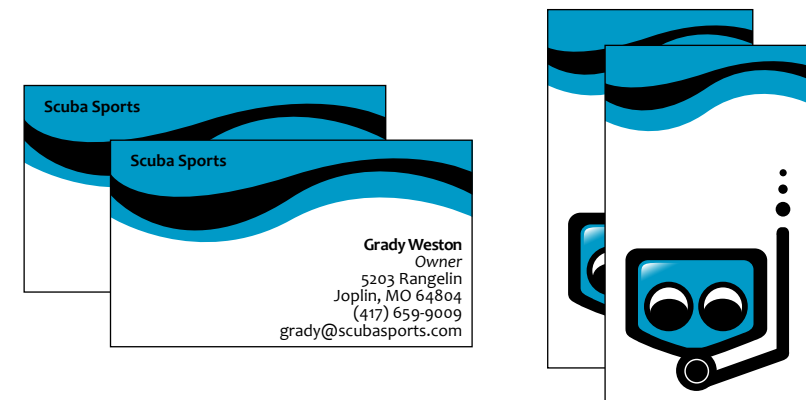
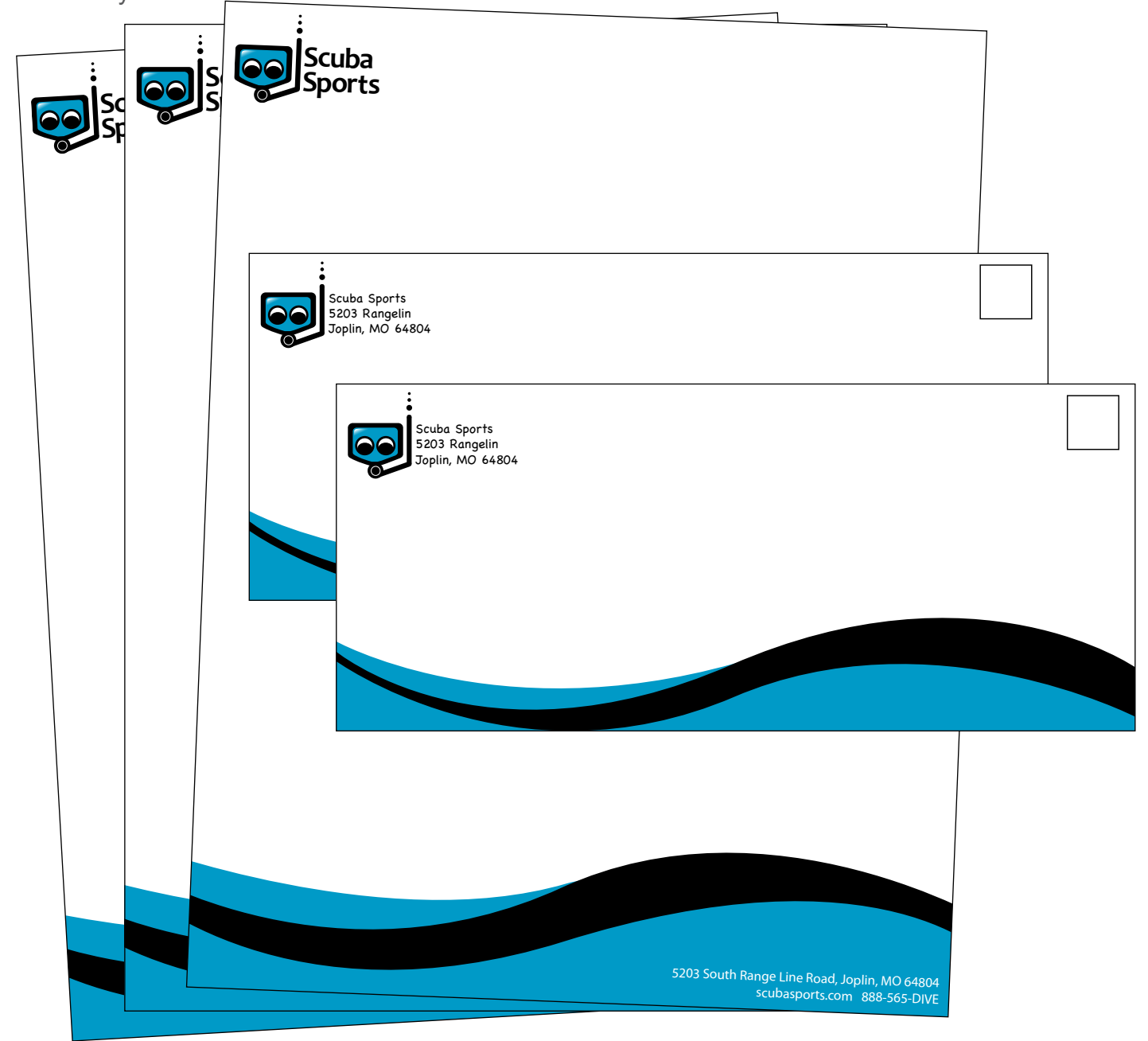
Full Color:



Gray Scale:



Stationery





Redesigned logo for Marshall's Fudge

Full Color:



Gray Scale:



Redesigned logo for Peet's Coffee & Tea, specifically for their tea products

Full Color:



Gray Scale:



(Peet's Tea)

(Promotion)

(Community Bank)

Magazine Ad



**Committed to
your company's
future!**

At Community Bank, we believe in giving each of our customers professional, personal attention. We are committed to providing responsive products and services that helps your company grow. We offer a variety of Commercial Real Estate loans to help you capitalize on business opportunities.



1-800-788-9999 cbank.com

Website

CALL US AT 1.800.788.9999

Community Bank
Partnership Banking

HOME ABOUT US FAQ CONTACT US

SEARCH:

Sign in to online banking:
 Person ID:
 Password:
[Log In](#)
[Forgot ID?](#) [Forgot Password?](#)

PERSONAL BANKING
 BUSINESS BANKING
 COMMERCIAL REAL ESTATE
 REMOTE DEPOSIT CAPTURE
 SBA PREFERRED LENDER
 INTERNATIONAL BANKING

FIND A LOCATION: Enter Zip [GO](#)

Glendale Relocation
 We have relocated the Glendale Business Banking Center on January 31st to 500 North Brand Boulevard, Suite 100, Glendale, CA 91203. Call them at 818) 549-7200.
[Learn more...](#)

Fitted for your lifestyle
 Our commitment to technology and innovation now matches our services and stability.
 Choose how you bank...
[online](#) [voice](#) [mobile](#)
 ...with cbank.com
[Learn more...](#)

Security Notification Alert Reminder
 Don't get hooked! Be wary of suspicious emails. Never open attachments, click on links, or respond to emails from suspicious or unknown senders.
[Learn more...](#)

Personal Banking | Business Banking | Commercial Real Estate Banking
[About Us](#) | [Locations](#) | [Contact Us](#) | [cBank onLine](#) | [Privacy Policy](#) | [Security Statement](#) | [Identity Theft Information](#)
 Member FDIC | Equal Housing Lender | © Community Bank

(Scuba Sports)

Insulated Bottle



Home About Contact Us
888-565-DIVE

Home

Welcome Divers!
Diving is your ticket to underwater exploration. The realm beneath the waves is a place that reveals itself to you a little more with each dive. Whether you are a beginner or a seasoned diver, you need the right scuba equipment to suit your needs.

SCUBAPRO UWATEC provides highly sophisticated products through advanced research, development and efficient manufacturing techniques. With more than 40 years of experience, they have seen diving evolve in every aspect of the sport. [Read More...](#)

Want to travel to the Caribbean to dive, but don't have a dive friend?
Extreme Sports Scuba plans group trips to Caribbean locations such as Cozumel at least twice a year. Not sure if you really want to travel that far? Not a problem, come and join us on one of our closer excursions to Beaver Lake, Tablerock Lake, or Mermet Springs, Illinois. [Read More...](#)

Home
Classes
Photo Gallery
Classes
Events
Staff
Contact Us

Join our mailing list:
Email address

SCUBAPRO UWATEC DAN SCUBA DIVING INTERNATIONALS



Magazine Cover Redesign

The Earth's Deadliest Seas:
Inside the Mystery of 100-ft Rogue Waves

Outside

March 2009

Why
Your
Workout is all
Wrong
(pg 134)

100 Best
Adventure
Web Sites.
Click Here for
Better Gear,
Travel, and
Fitness

Plus:
Dress Like a Player.
Our Guide to
Summer Style

50
Ways to
Live Large

Start a Business You Love
Finish Your First Marathon
Plan Your Dream Adventure



Magazine Cover Redesign

The Earth's Deadliest Seas:
Inside the Mystery of 100-ft Rogue Waves

Outside

March 2009

50
Ways to
Live Large

Why
Your Workout
is All Wrong
(pg 134)

(Start a Business You Love
Finish Your First Marathon
Plan Your Dream Adventure)

100 Best
Adventure
Web Sites
Click Here for
Better Gear,
Travel, and
Fitness

+ Plus:
Dress Like a Player
Our Guide to Summer Style





Poster Design: Call to Action

Find out where you're needed...
NOW
Volunteer your time!

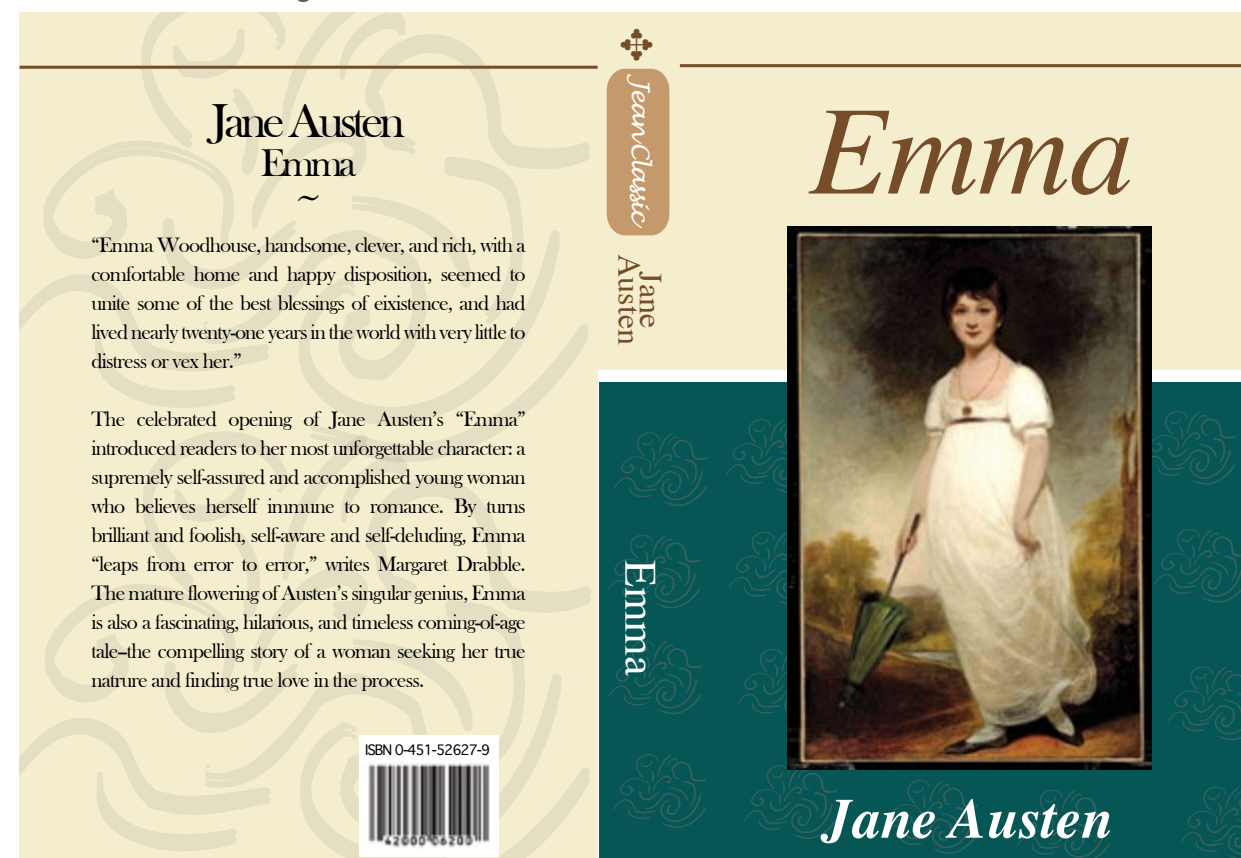
At USAService we're dedicated
to helping you get plugged
into your community

Plant a tree.
Clean a park.
Serve dinner to the homeless.
Whatever you do, we know you'll find
joy in contributing your time to improve
America one community at a time.

Visit our website: www.USAService.org
Click on "FIND A PROJECT"

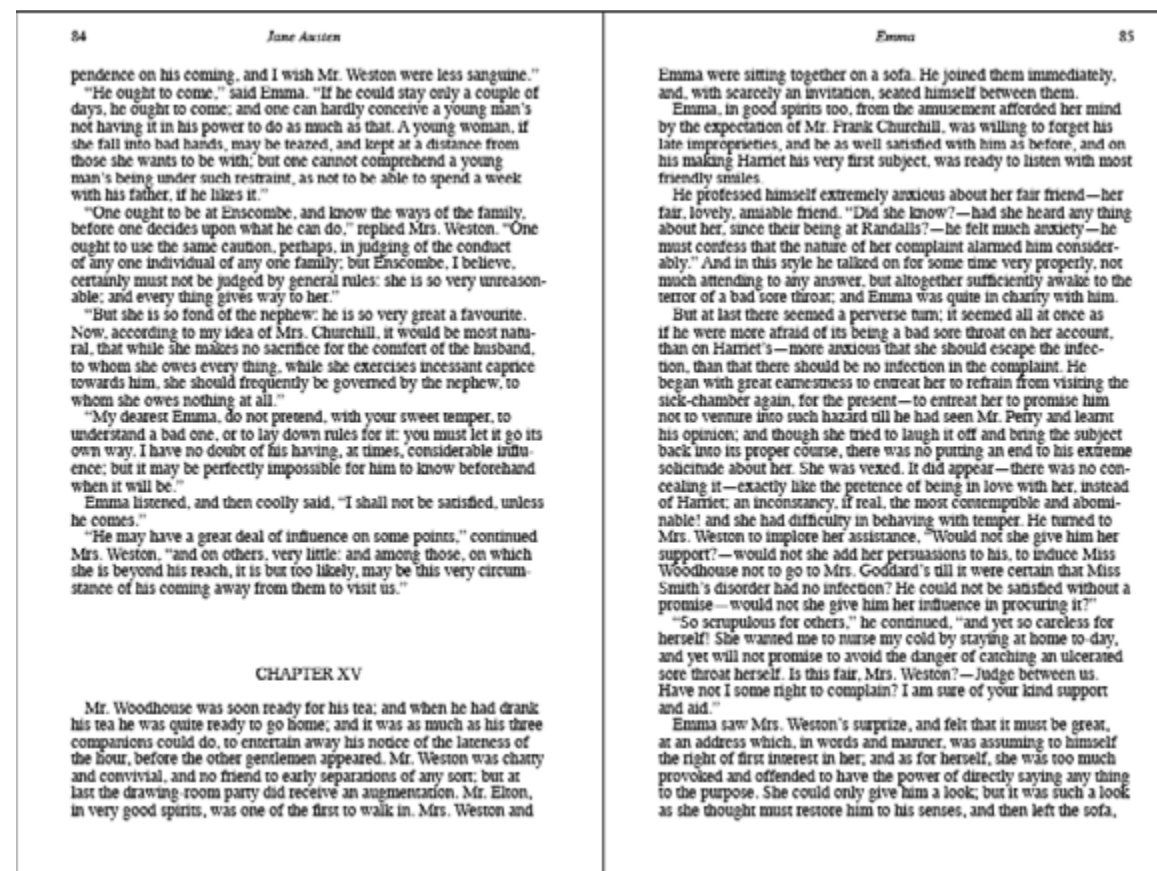


Book Cover Redesign



Emma

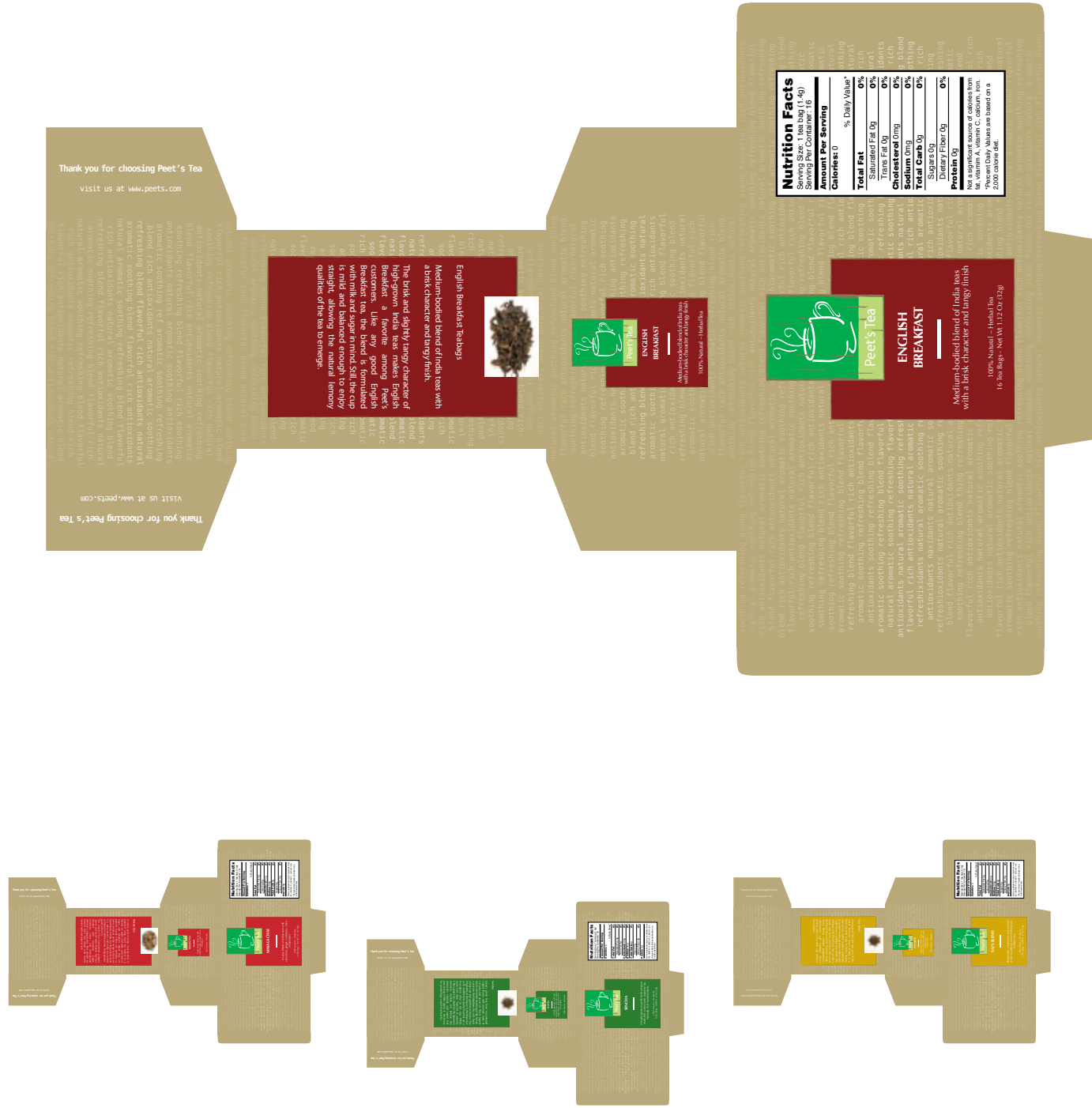
Inside Contents Redesign



(Packaging)

(Peet's Tea)

Tea Box Templates



Tea Packets and Tags



Redesigned Tea Boxes



Redesigned Tea Packets



Redesigned Tea Tags



(Marshall's Fudge)

Bag Templates for Fudge



Assembled Bags



Assembled Bags- Front



Assembled Bags- Back



(Fine Art)

HOW GREAT THOU ART

A musical score for the hymn "How Great Thou Art" is printed on a wooden surface. The score consists of several staves of music, with lyrics written below each staff. The wood grain is visible throughout the page.







Academic Portfolio of Leah Hough
December 2011

Leah Hough
Plan IV Graphic Design
Visual Arts Department
CSUSB
Art 443 Fall 2011
Design Professor George McGinnis